
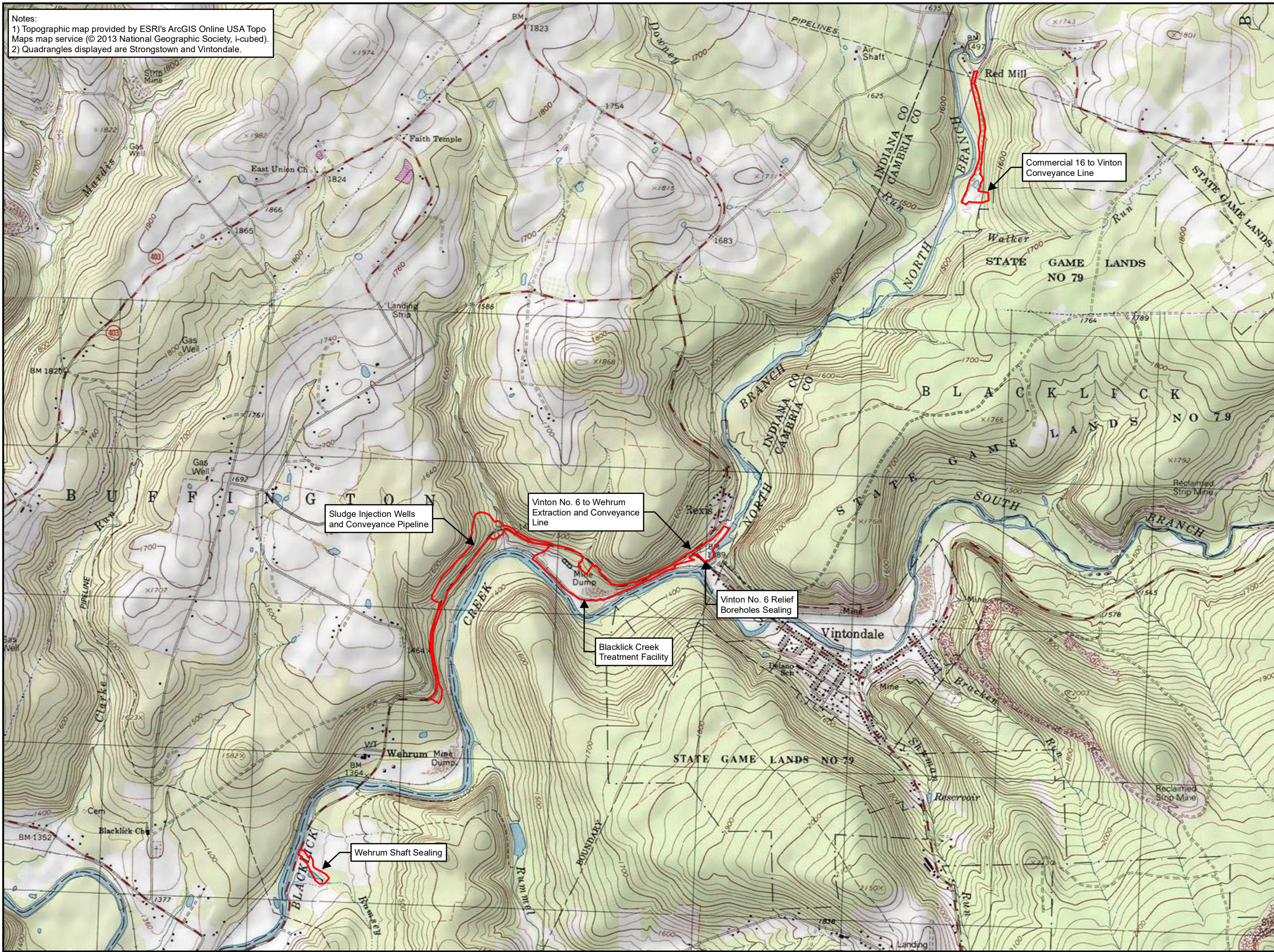


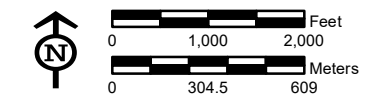
Notes:  
 1) Topographic map provided by ESRI's ArcGIS Online USA Topo Maps map service (© 2013 National Geographic Society, i-cubed).  
 2) Quadrangles displayed are Strongstown and Vintondale.

**Legend**

 Study Area



**Sheet Identifier**

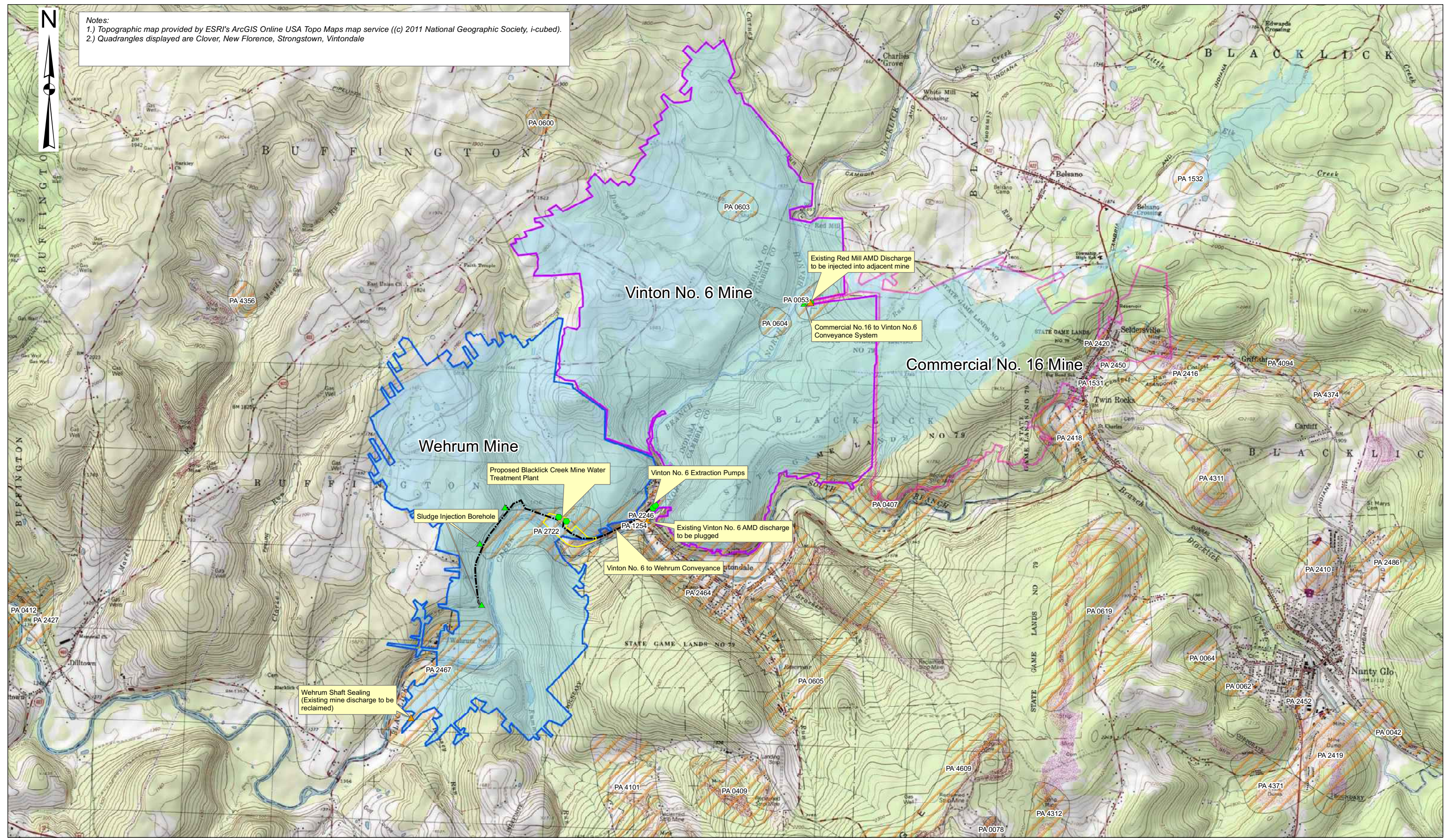


**FIGURE 1**  
**USGS PROJECT LOCATION MAP**  
**BLACKLICK CREEK TREATMENT FACILITY**  
**PADEP**  
**BLACKLICK, BUFFINGTON & E. WHEATFIELD**  
**INDIANA & CAMBRIA COUNTY, PA**



DRAWN BY: P. DESIMONE 04/09/20  
 CHECKED BY: K. McCLUSKEY 04/09/20  
 APPROVED BY: H. SCHUMACHER 04/09/20  
 CONTRACT NUMBER: 212C-CF-00232

Notes:  
 1.) Topographic map provided by ESRI's ArcGIS Online USA Topo Maps map service ((c) 2011 National Geographic Society, i-cubed).  
 2.) Quadrangles displayed are Clover, New Florence, Strongstown, Vintondale



**Legend**

- ▲ Existing AMD discharges
- Proposed Extraction Pumps
- ▲ Proposed Mine Water/Sludge Injection Borehole
- Proposed Pipelines
- Approx. Extent of Mine Pool
- ▨ OSM AML Inventory Sites

Date: October 11, 2019	Project No.: 212C-PB-00814	Scale: 1 inch = 1,500 feet
Drawn by: HAT	Checked by:	0 1,000 2,000 4,000 Feet

**BUREAU OF ABANDONED MINE RECLAMATION  
 BLACKLICK CREEK TREATMENT FACILITY**

BLACKLICK, BUFFINGTON, & EAST WHEATFIELD TOWNSHIPS CAMBRIA & INDIANA COUNTIES

**PROJECT LOCATION MAP**

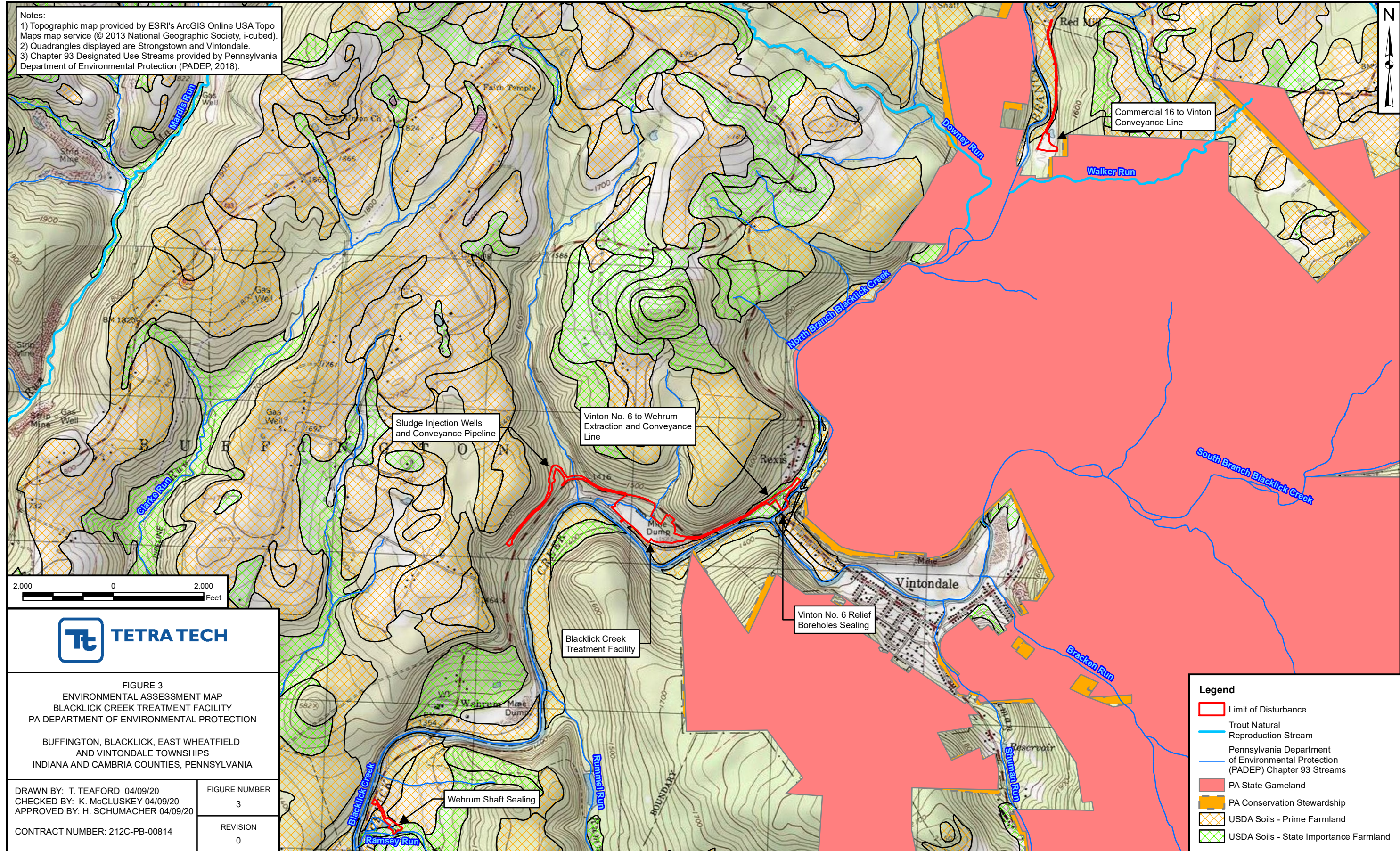
FIGURE 2

**TETRA TECH**  
 complex world | CLEAR SOLUTIONS  
 661 ANDERSEN DRIVE - FOSTER PLAZA 7  
 PITTSBURGH, PA 15220  
 T: (412) 921-7090 | F: (412) 921-4040

**pennsylvania**  
 DEPARTMENT OF ENVIRONMENTAL PROTECTION

Path: S:\Tom Gray Files - Tom Gray\PADEP BOM Programs\Blacklick Creek AMD Facility 112C07166\GIS\Blacklick Project site2.mxd

Notes:  
 1) Topographic map provided by ESRI's ArcGIS Online USA Topo Maps map service (© 2013 National Geographic Society, i-cubed).  
 2) Quadrangles displayed are Strongstown and Vintondale.  
 3) Chapter 93 Designated Use Streams provided by Pennsylvania Department of Environmental Protection (PADEP, 2018).



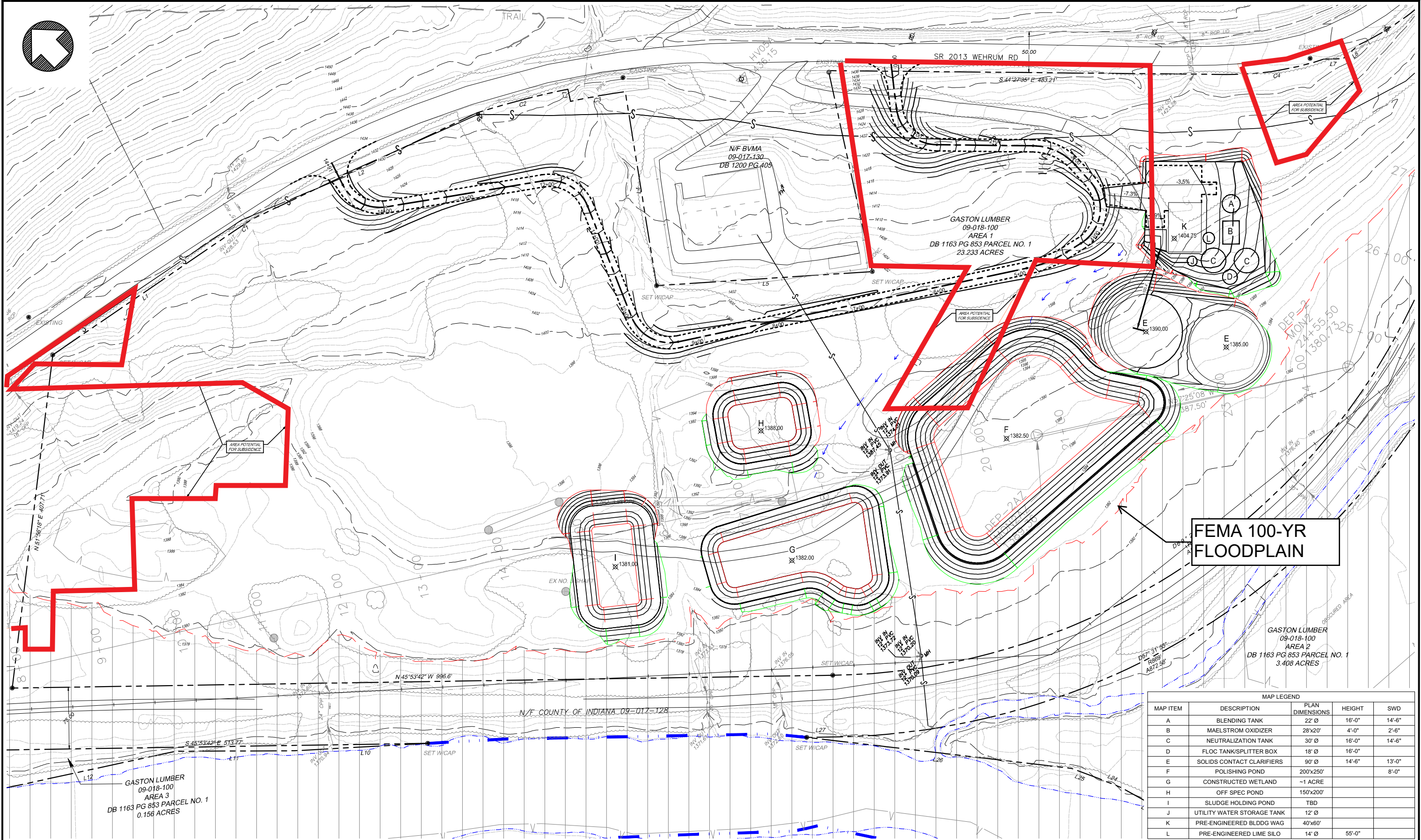
**FIGURE 3**  
 ENVIRONMENTAL ASSESSMENT MAP  
 BLACKLICK CREEK TREATMENT FACILITY  
 PA DEPARTMENT OF ENVIRONMENTAL PROTECTION  
 BUFFINGTON, BLACKLICK, EAST WHEATFIELD  
 AND VINTONDALE TOWNSHIPS  
 INDIANA AND CAMBRIA COUNTIES, PENNSYLVANIA

DRAWN BY: T. TEAFORD 04/09/20  
 CHECKED BY: K. McCLUSKEY 04/09/20  
 APPROVED BY: H. SCHUMACHER 04/09/20  
 CONTRACT NUMBER: 212C-PB-00814

FIGURE NUMBER  
 3  
 REVISION  
 0

**Legend**

- Limit of Disturbance
- Trout Natural  
Reproduction Stream
- Pennsylvania Department  
of Environmental Protection  
(PADEP) Chapter 93 Streams
- PA State Gameland
- PA Conservation Stewardship
- USDA Soils - Prime Farmland
- USDA Soils - State Importance Farmland



FEMA 100-YR FLOODPLAIN

MAP LEGEND				
MAP ITEM	DESCRIPTION	PLAN DIMENSIONS	HEIGHT	SWD
A	BLENDING TANK	22' Ø	16'-0"	14'-6"
B	MAELSTROM OXIDIZER	28x20'	4'-0"	2'-6"
C	NEUTRALIZATION TANK	30' Ø	16'-0"	14'-6"
D	FLOC TANK/SPLITTER BOX	18' Ø	16'-0"	
E	SOLIDS CONTACT CLARIFIERS	90' Ø	14'-6"	13'-0"
F	POLISHING POND	200x250'		8'-0"
G	CONSTRUCTED WETLAND	~1 ACRE		
H	OFF SPEC POND	150x200'		
I	SLUDGE HOLDING POND	TBD		
J	UTILITY WATER STORAGE TANK	12' Ø		
K	PRE-ENGINEERED BLDDG WAG	40x60'		
L	PRE-ENGINEERED LIME SILO	14' Ø	55'-0"	



NO.	BY	DATE	DESCRIPTION
REVISIONS			

SUBMITTED BY:  
TETRA TECH, INC.

APPROVED BY:  
BARR PROJECT MANAGER TITLE AND OFFICE

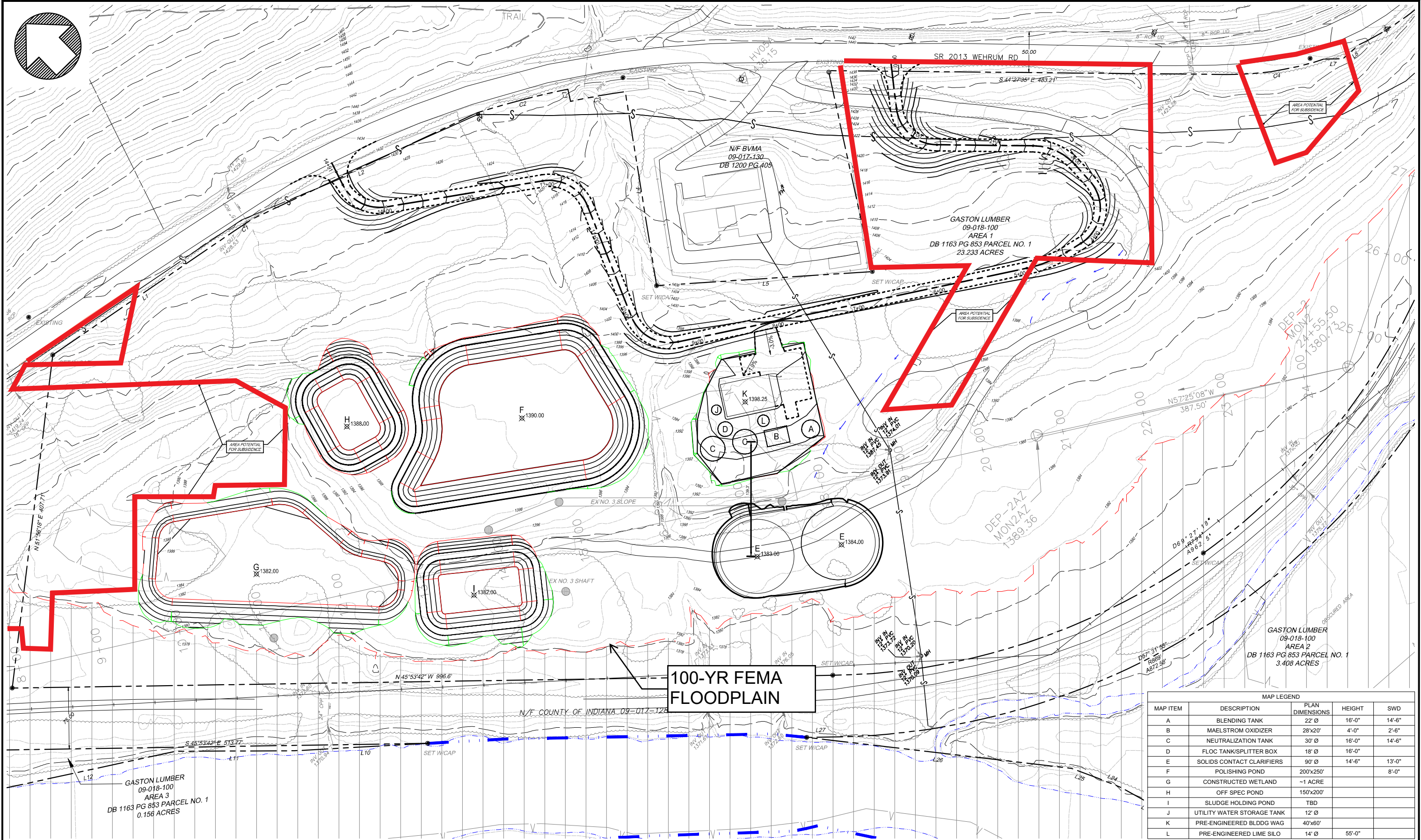
DATE: 08/13/2018  
DRAWN BY: JNB  
ACAD FILE NAME:

PLOT DATE:  
CHECKED BY: HT

SCALE: 0 50' 100'

ALL EXISTING CONDITIONS SHALL BE CHECKED AND VERIFIED BY THE CONTRACTOR AT THE SITE

ACID MINE DRAINAGE ABATEMENT PROJECT  
**BLACKLICK CREEK TREATMENT FACILITY**  
BLACKLICK, BUFFINGTON, EAST WHEATFIELD TOWNSHIPS  
CAMBRIA AND INDIANA COUNTIES  
CONTRACT NO. AMD 32(2722)102.1  
OPTION 1



**100-YR FEMA FLOODPLAIN**

MAP LEGEND				
MAP ITEM	DESCRIPTION	PLAN DIMENSIONS	HEIGHT	SWD
A	BLENDED TANK	22' Ø	16'-0"	14'-6"
B	MAELSTROM OXIDIZER	28'x20'	4'-0"	2'-6"
C	NEUTRALIZATION TANK	30' Ø	16'-0"	14'-6"
D	FLOC TANK/SPLITTER BOX	18' Ø	16'-0"	
E	SOLIDS CONTACT CLARIFIERS	90' Ø	14'-6"	13'-0"
F	POLISHING POND	200'x250'		8'-0"
G	CONSTRUCTED WETLAND	~1 ACRE		
H	OFF SPEC POND	150'x200'		
I	SLUDGE HOLDING POND	TBD		
J	UTILITY WATER STORAGE TANK	12' Ø		
K	PRE-ENGINEERED BLDDG WAG	40'x60'		
L	PRE-ENGINEERED LIME SILO	14' Ø	55'-0"	



NO.	BY	DATE	DESCRIPTION
REVISIONS			

SUBMITTED BY:  
TETRA TECH, INC.

APPROVED BY:  
BARR PROJECT MANAGER TITLE AND OFFICE

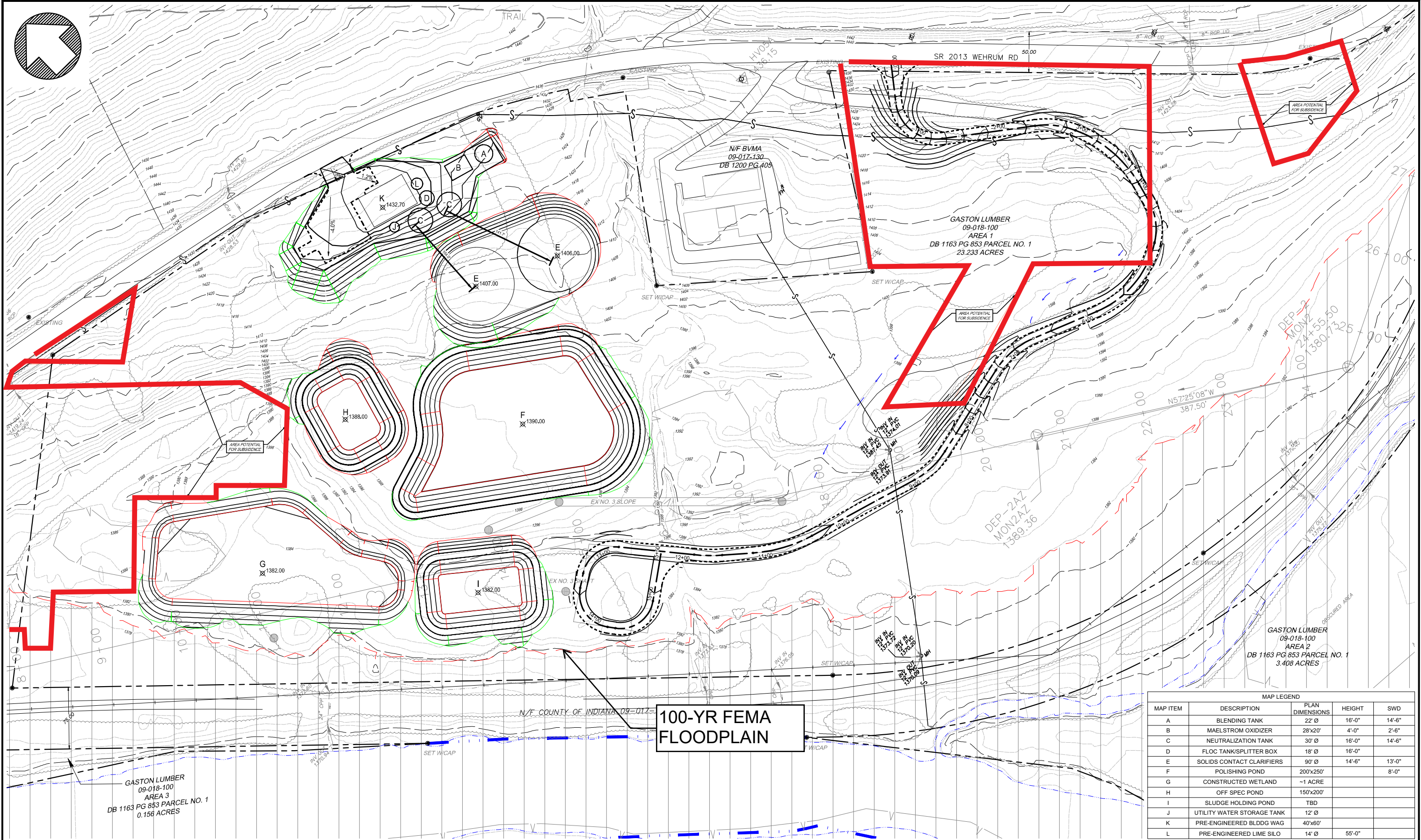
DATE: 08/13/2018  
DRAWN BY: JNB  
ACAD FILE NAME:

PLOT DATE:  
CHECKED BY: HT

SCALE: 0 50' 100'

ALL EXISTING CONDITIONS SHALL BE CHECKED AND VERIFIED BY THE CONTRACTOR AT THE SITE

ACID MINE DRAINAGE ABATEMENT PROJECT  
**BLACKLICK CREEK TREATMENT FACILITY**  
BLACKLICK, BUFFINGTON, EAST WHEATFIELD TOWNSHIPS  
CAMBRIA AND INDIANA COUNTIES  
CONTRACT NO. AMD 32(2722)102.1  
OPTION 2



**100-YR FEMA FLOODPLAIN**

MAP LEGEND				
MAP ITEM	DESCRIPTION	PLAN DIMENSIONS	HEIGHT	SWD
A	BLENDING TANK	22' Ø	16'-0"	14'-6"
B	MAELSTROM OXIDIZER	28'x20'	4'-0"	2'-6"
C	NEUTRALIZATION TANK	30' Ø	16'-0"	14'-6"
D	FLOC TANK/SPLITTER BOX	18' Ø	16'-0"	
E	SOLIDS CONTACT CLARIFIERS	90' Ø	14'-6"	13'-0"
F	POLISHING POND	200'x250'		8'-0"
G	CONSTRUCTED WETLAND	~1 ACRE		
H	OFF SPEC POND	150'x200'		
I	SLUDGE HOLDING POND	TBD		
J	UTILITY WATER STORAGE TANK	12' Ø		
K	PRE-ENGINEERED BLDDG WAG	40'x60'		
L	PRE-ENGINEERED LIME SILO	14' Ø	55'-0"	



NO.	BY	DATE	DESCRIPTION
REVISIONS			

SUBMITTED BY:  
TETRA TECH, INC.

APPROVED BY:  
BARR PROJECT MANAGER TITLE AND OFFICE

DATE: 08/13/2018  
DRAWN BY: JNB  
ACAD FILE NAME:

PLOT DATE: ---  
CHECKED BY: HT

SCALE: 0 50' 100'

ALL EXISTING CONDITIONS SHALL BE CHECKED AND VERIFIED BY THE CONTRACTOR AT THE SITE

ACID MINE DRAINAGE ABATEMENT PROJECT  
**BLACKLICK CREEK TREATMENT FACILITY**  
BLACKLICK, BUFFINGTON, EAST WHEATFIELD TOWNSHIPS  
CAMBRIA AND INDIANA COUNTIES  
CONTRACT NO. AMD 32(2722)102.1  
DRAWING NUMBER:  
**OPTION 3**